

TECHNICAL RIDER

ATEMPO

GENERAL INFORMATION

DURATION OF THE SHOW:
45 minutes

PLACE OF REPRESENTATION:
indoor or outdoor

AUDIENCE:
+ 5 years old

EQUIPMENT

• SOUND:

- Amplification system according to the place of representation.
- Cables to connect a Loop Station with JACK 6.3 output to sound mixer (the company has a cable JACK to JACK of 9 meters).
- There is the possibility of connecting the Loop Station directly to active speakers.

• LIGHT:

For theatres:

- 17 spotlights
- mixer with 12 chanel, with memories
- see below light plan "Theatre performance"

For Street performance at night:

- 10 spotlights
- mixer of 6 chanel
- see below light plan "Night street performance"

If required so, the performance can also be performed with fixed and general lighting.

STAFF

The company does not come with a technician.

A technician will be required to the organisation in case of:

- indoor show, for setting up and operating lights (prior a 1h rehearsal. There are 4 changes, 5 memories)
- street show at night, for setting up lights.

SCHEDULE

SETTING UP PROPS:

30 minutes

ARTISTS PREPARATION:

1 hour 30 minutes ideally in a space with 4,5m height.

DURATION OF THE SHOW:

45 minutes

SETTING DOWN PROPS:

30 minutes

IN CASE OF NIGHT SHOW OR INDOOR SHOW

LIGHT DIRECTING and SOUND CHECK:

1 hour

REHEARSAL WITH LIGHT OPERATOR:

1 hour

SPACES

Performing space

Minimum dimensions:

- Large: 6 mts
- Depth: 5 mts
- Height: 4 mts

Ideal dimensions:

- Large: 8 mts
- Depth: 6 mts
- Height: 5 mts

Other specifications:

- Hard, flat and smooth floor, without inclinations.
- Clean floor.
- For outdoor performances: linolium dance floor, wood, flat concrete OR other similar kind of floor.
- Minimum of 15°C

Audience positioning

- Frontal or halfcircle.

Space for warming up

- Minimum of 15°C
- Ideally 4,5 mts height

Changing room

- 1 changing room, with toilet access.

FOOD (according to agreement with the organisation)

- Catering: fruits, nuts, water
- Meals: vegetarians

ACCOMMODATION (according to agreement with the organisation)

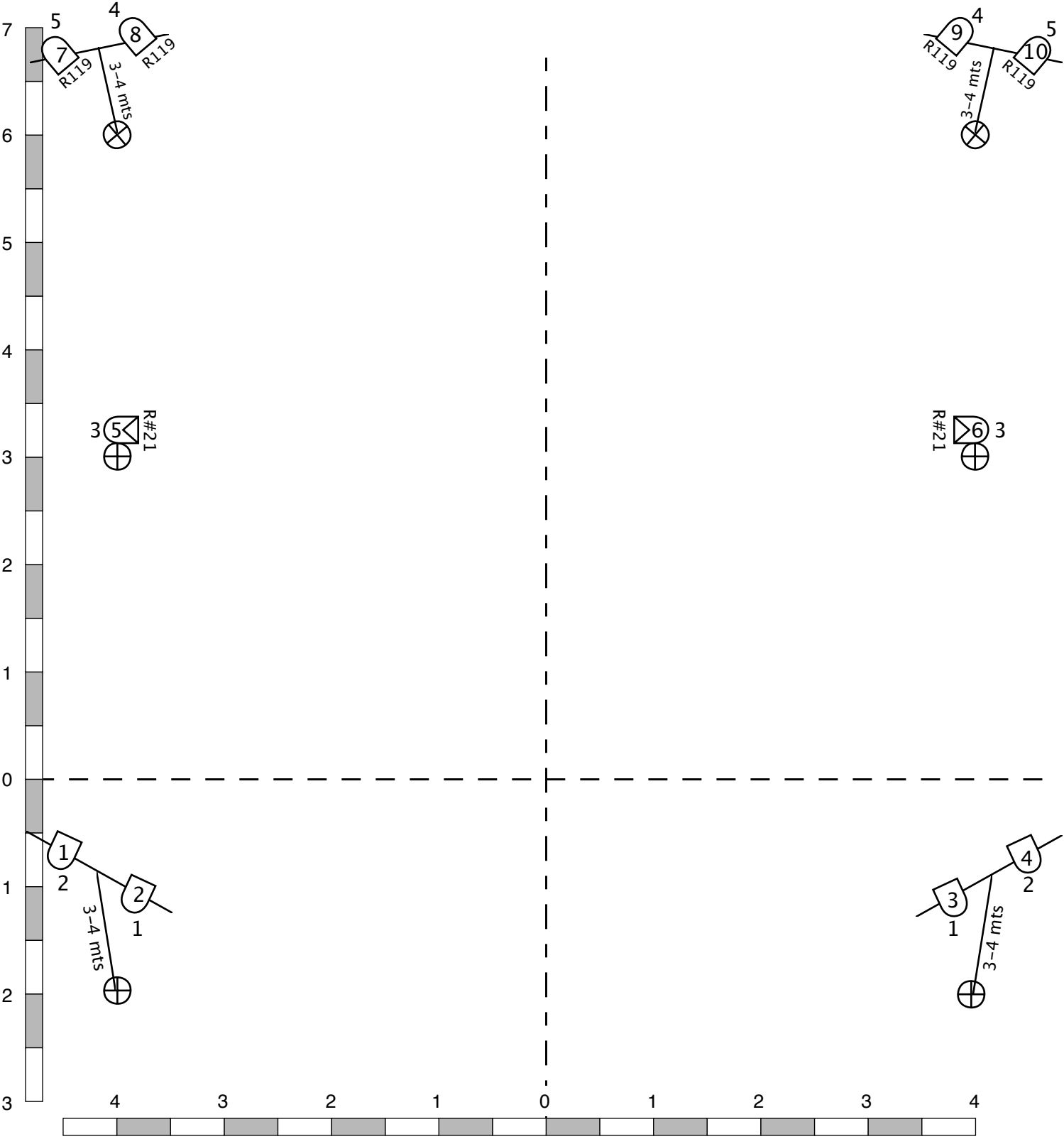
- Double bedroom

*In case some of these conditions can not be fulfilled, contact VAYA in order to find solutions.





CIA VAYA

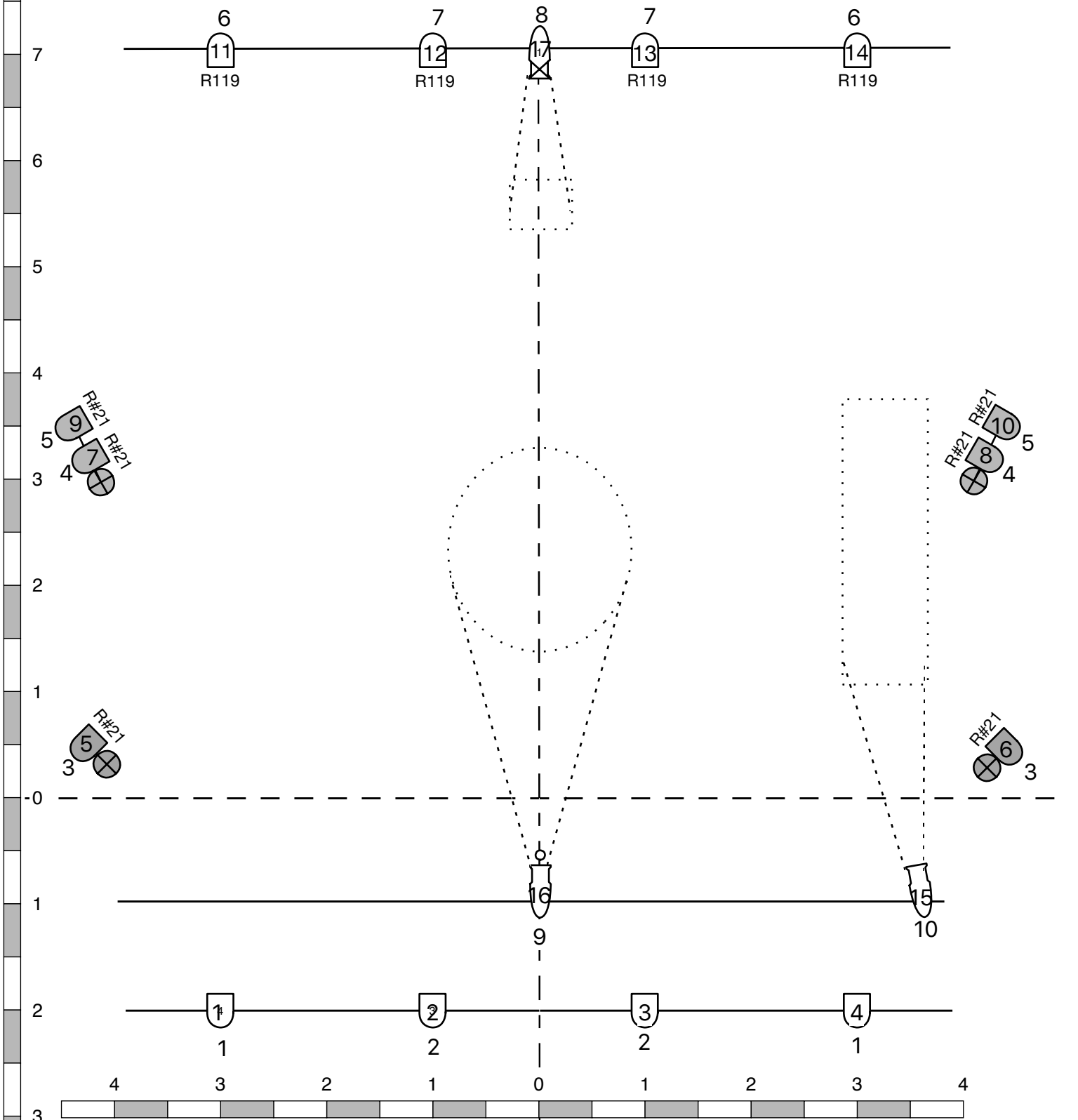
Tim Belime - Berna Huidobro
www.ciavaya.com
ciavaya.circo@gmail.com
+56 9 5611 4001





<h1>ATEMPO</h1>	<h2>Light Plot</h2>
Venue: night street performance	
Designer: Tim Belime	
17/06/19	

<h3>Key</h3>	
	
	par64wfl
	par64mfl
	Location



Atempo

Venue: Theater performance
 Designer: Tim Belime
 19-06-201

Light Plot

Key		SL36		Location
		SL19		
		par64mf1		
		Iris		